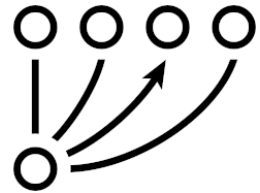


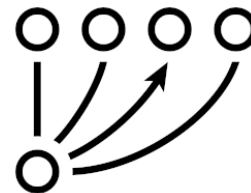
The use of models for NCCCPs

Rory Watts, MPH, PhD
Director, Forecast Health



Goal of this presentation

- Give you intuition about models and their use
- Highlight strengths and limitations of the Cancer Costing Tool
- Show next steps to address limitations
- Request your help!



What is a model?

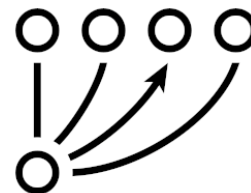
What is a model?

- A vague term
- Using numbers to capture something useful
- Difficult to do with words, or less numbers

Why is it helpful?

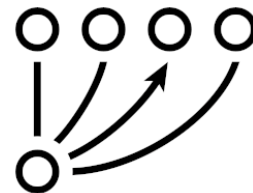
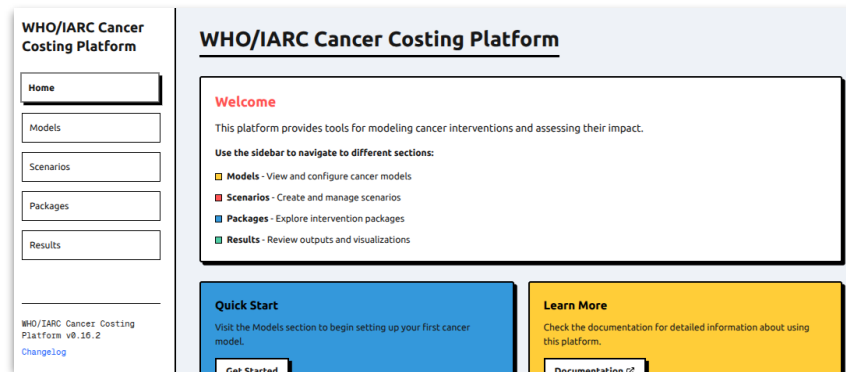
- Help understand dynamics, complexity
- Advance an argument using numbers
- Understand “what-if?” scenarios

Not a magic bullet



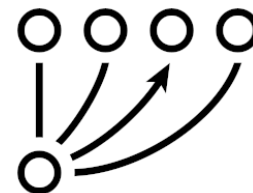
The WHO/IARC Cancer Costing Platform

- A website
 - Has many models
 - Each model has many “scenarios”
 - Can add resources and costs
- The basic idea
 - At the national level, generate plausible estimates of cancer incidence, prevalence, stage distributions, benefits of interventions, costs of interventions
- Useful for
 - Macro questions e.g. implementing an intervention, changes to incidence, risk factors, broad budget

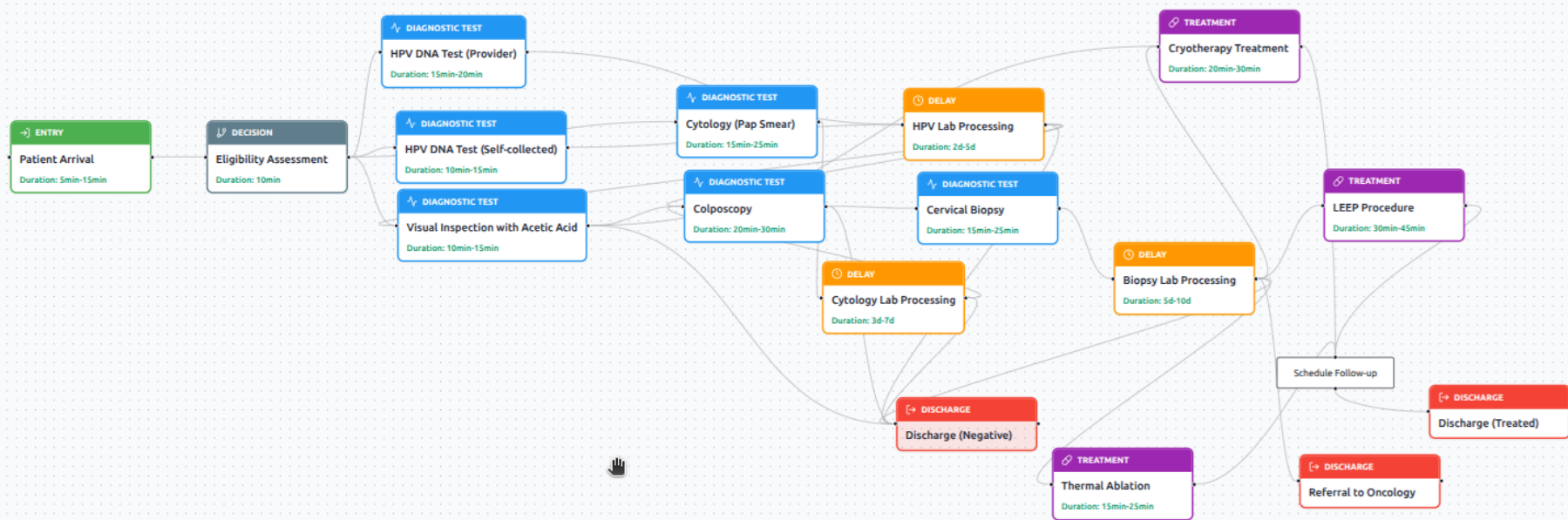


Shortcomings of the Cancer Costing Platform

- Less focused on “how to implement”.
- National focus, not subnational, facility-level
- Difficult to think about time less than 1 year
- Difficult to generate what-ifs about the health system



Next Steps - A complimentary modelling approach



are the bottlenecks in our delivery?

Fitting this to NCCPs

- To provide high level estimates of burden of disease, effects of interventions/policies - **Cancer Costing Tool**
- To provide low level estimates of resource requirements, costs, and how resources should be allocated - **Discrete Event Tool**

For the moment, the Cancer Costing Tool does a great job at both.

The Discrete Event Tool is an upgrade to practical questions of “how to implement”

We'd love to hear from you!

- It would be useful to pilot this work in a few countries
- The goal
 - Fully integrated
 - Country level data & health system mapping
 - Live updates, scenario processing
 - One-click NCCP modelling

Contact me: rory@forecasthealth.org

