

Cyprus

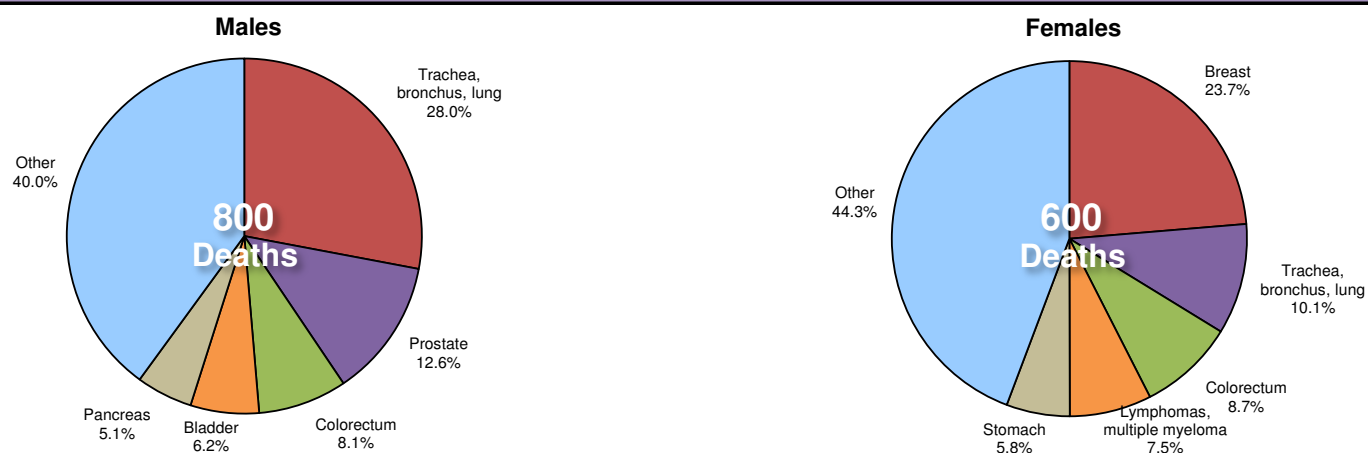
Total population: 1,129,000

Income group: High

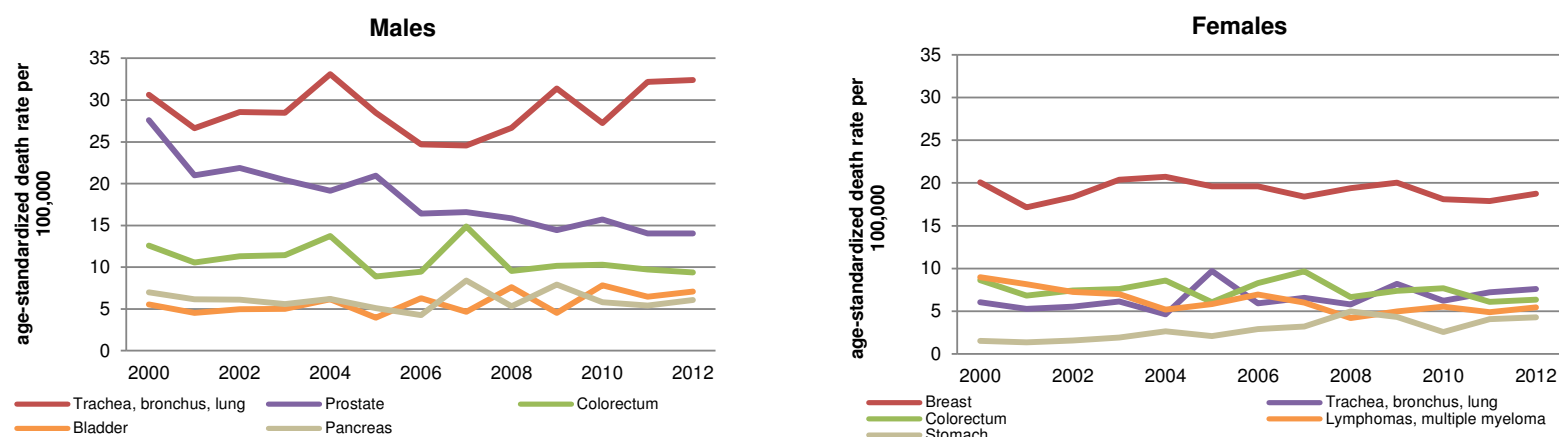
Total deaths: 6,200

Life expectancy at birth: Total:82 Males:80 Females:84

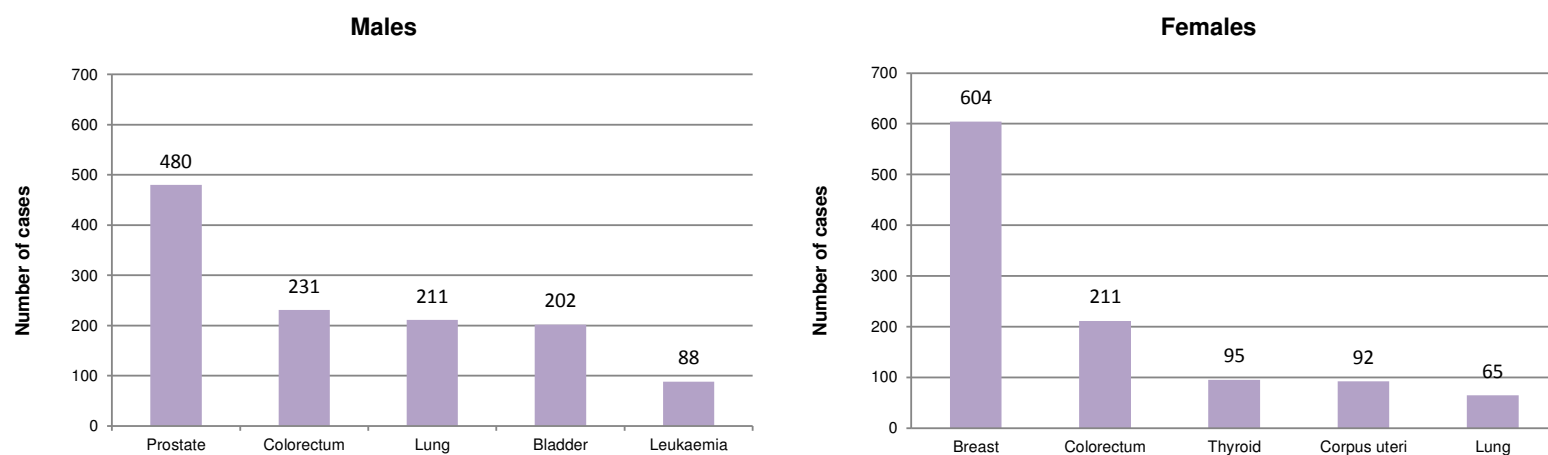
Cancer Mortality Profile



Age-Standardized Cancer Mortality Trends



Cancer Incidence



Adult Risk Factors

	Males	Females	Total
Current tobacco smoking (2011)	41.4%	18.4%	30.1%
Total alcohol per capita consumption, in litres of pure alcohol (2010)	12.5	5.7	9.2
Physical inactivity (2010)	29.3%	41.5%	35.3%
Obesity (2014)	22.3%	26.8%	24.5%
Household solid fuel use (2012)	-	-	0.0%

Cancer Plans, Monitoring and Surveillance

Has an operational cancer policy/strategy/action plan	Yes
Has a cancer registry	Yes
Scope	Population-based
Coverage	National
Last year of data	2009

Cancer Primary Prevention Policies

Tobacco control

Has an operational policy, strategy or action plan to reduce the burden of tobacco use	Yes
Smoke-free legislation	Six to seven public places completely smoke-free
Tobacco dependence treatment	NRT and/or some cessation services (at least one of which is cost-covered)
Warning labels	Medium size warnings missing some appropriate characteristics OR large warnings missing many appropriate characteristics
Bans on advertising, promotion and sponsorship	Ban on national television, radio and print media as well as on some but not all other forms of direct and/or indirect advertising
Tobacco taxes	>75% of retail price is tax*

Overweight and obesity prevention and control

Has an operational policy, strategy or action plan for reducing overweight/obesity	Yes
--	-----

Physical inactivity prevention and control

Has an operational policy, strategy or action plan to reduce physical inactivity and/or promote physical activity	DK
---	----

Harmful use of alcohol prevention and control

Has an operational policy, strategy or action plan to reduce the harmful use of alcohol	DK
---	----

National immunization

Human Papillomavirus vaccination schedule	...
Hepatitis B vaccination schedule	2 months, +4 months, +8-12 months
Hepatitis B vaccination coverage, infants	96%

Cancer Screening and Early Detection

Cervical cancer

Cervical cytology (PAP)	Generally available at the public primary health care level
Acetic acid visualization (VIA)	Generally available at the public primary health care level

Breast cancer

Breast palpation / clinical breast exam (CBE)	Generally available at the public primary health care level
Mammogram	Generally available at the public primary health care level

Colorectal cancer

Faecal occult blood test or faecal immunological test	Generally available at the public primary health care level
Bowel cancer screening by exam or colonoscopy	Generally available at the public primary health care level

Cancer Treatment and Palliative Care

Radiotherapy	Generally available in the public health system
Total high energy teletherapy units / million inhabitants	2.6
Number of radiotherapy centres	1
Number of radiation oncologists	7
Chemotherapy (medicines not specified)	Generally available in the public health system
Oral morphine (formulation not specified)	Generally available in the public health system
Non-methadone morphine equivalent consumption per cancer death (mg)	...
Community/home care for people with advanced stage cancer and other NCDs	Generally available

* Indicates highest possible level of achievement

... = No data available
DK = Country responded "don't know"