



Ministry of Health



**National Cancer Control  
Monitoring, Evaluation,  
Accountability and Learning  
(MEAL) Framework 2023-2028**

# Kenya National Cancer Control MEAL Framework

## 2023-2028

---

Valerian Mwenda; MBChB, MSc. PhD

# Disclosures

---

None to declare



REPUBLIC OF KENYA



**Ministry of Health**

# Outline



Policy basis of National Cancer MEAL Framework



Structure of the MEAL Framework



NCCP/MEAL framework link



Baselines and targets



Linking data to action



Key lessons

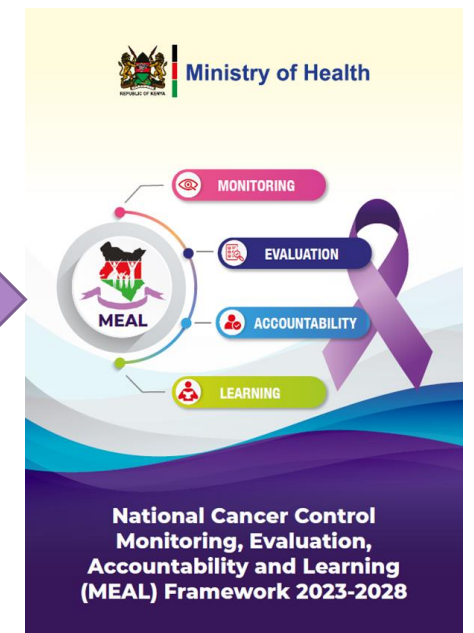
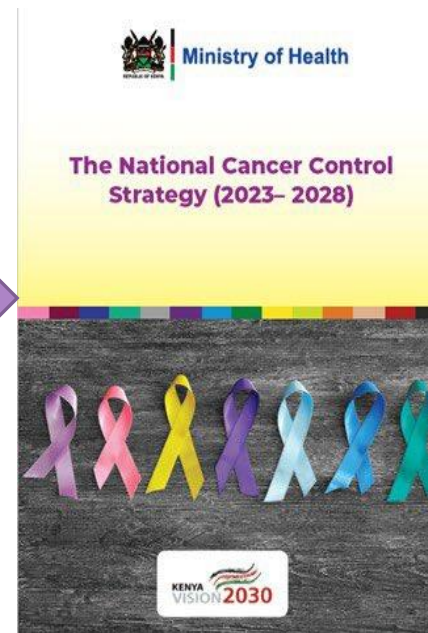


REPUBLIC OF KENYA



**Ministry of Health**

# Policy basis of the MEAL framework



Ministry of Health



The National Cancer Control MEAL Framework, together with the National Cancer Control Strategy 2023-2027, was launched by the PS, State Department for Medical services, Ministry of Health, on July 14, 2023



# Why a MEAL Framework?

- Accountability (proving): showing that activities are leading to certain outputs, outcomes and the goal, and that this was achieved efficiently, effectively and with good value for money;
- Evidence-based learning (improving): building knowledge and evidence about the extent to which certain strategies, interventions, approaches, activities, etc. have been effective or not in their respective contexts and why;
- Policy influence: generating policy and practice-relevant evidence that can be used to inform government policies and the design and implementation of government programmes.



# Scope: indicator types

---

- **Structural/input indicators:** resources needed for the implementation of an intervention
- **Process indicators** measure whether planned activities took place
- **Outcome indicators** measure whether the program is achieving the expected effects/changes in the short, intermediate, and long term
- **Impact indicators** reveal the long-term effects of the interventions



REPUBLIC OF KENYA

**Ministry of Health**

# Scope: cancer control continuum

---

- Cancer prevention: control of cancer risk factors
- Cancer screening: Cervical cancer, Breast cancer, Colorectal cancer
- Cancer diagnosis, treatment, palliative care and survivorship for priority cancers
- Cancer control health system strengthening, advocacy, partnerships and financing
- Strategic information, surveillance, registration and research



REPUBLIC OF KENYA

**Ministry of Health**



# Logical Framework

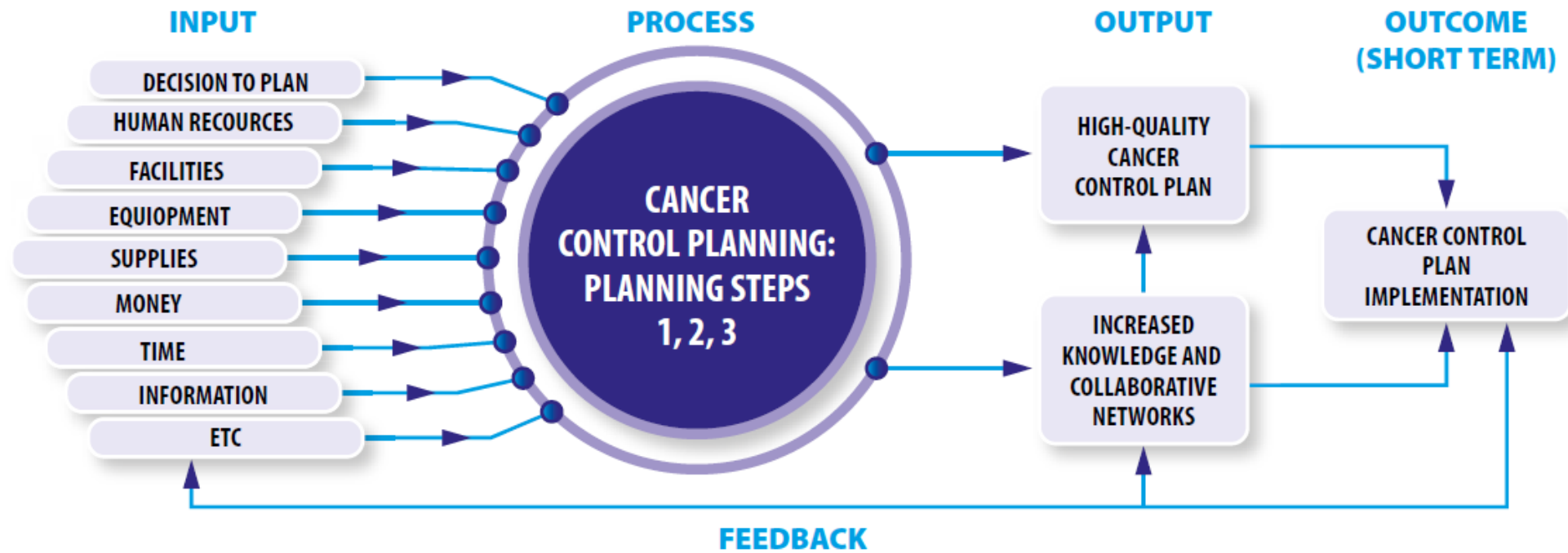


Figure 5: Monitoring and Evaluation planning and feedback cycle. (Source: Cancer control: knowledge into action: WHO guide for effective programmes; module 1)



## How does the NCCS and the MEAL Framework Link-up?

	NCCS	MEAL framework
Pillar 1	<i>Strategy 1:</i> Reduce prevalence of use to tobacco and tobacco-related products and by-products from 13.3% to 6.5% by 2028	<i>Indicator:</i> Proportion of persons 18 years and above using tobacco <i>Baseline:</i> 13.3% <i>Target:</i> 6.5% <i>Data source:</i> STEPS survey <i>Responsible:</i> Division of tobacco control <i>Reporting frequency:</i> every five years
Pillar 3	<i>Strategy 3:</i> Improve childhood cancer treatment, palliative care, survivorship and rehabilitation	Proportion of paediatric oncology patients alive five years after diagnosis Baseline: 20% Target: 60% Data source: Cancer Registry report Responsible: NCCP, NCI-K Reporting frequency: Annually



# Sources of baseline data

---

- Kenya Health Information system
- National surveys
- Research studies
- National Economic Surveys
- National Health Accounts
- Other relevant state agencies
- Expert consultation



REPUBLIC OF KENYA

**Ministry of Health**

# What about targets?

---

## Global strategies

- Cervical cancer screening coverage
- Childhood cancer survival

## Other relevant strategic plans

- Tobacco use prevalence: Tobacco control strategic plan
- Alcohol use prevalence: The National Authority for the Campaign Against Alcohol and Drug Abuse Strategic Plan 2023- 2027

## Stakeholder consensus

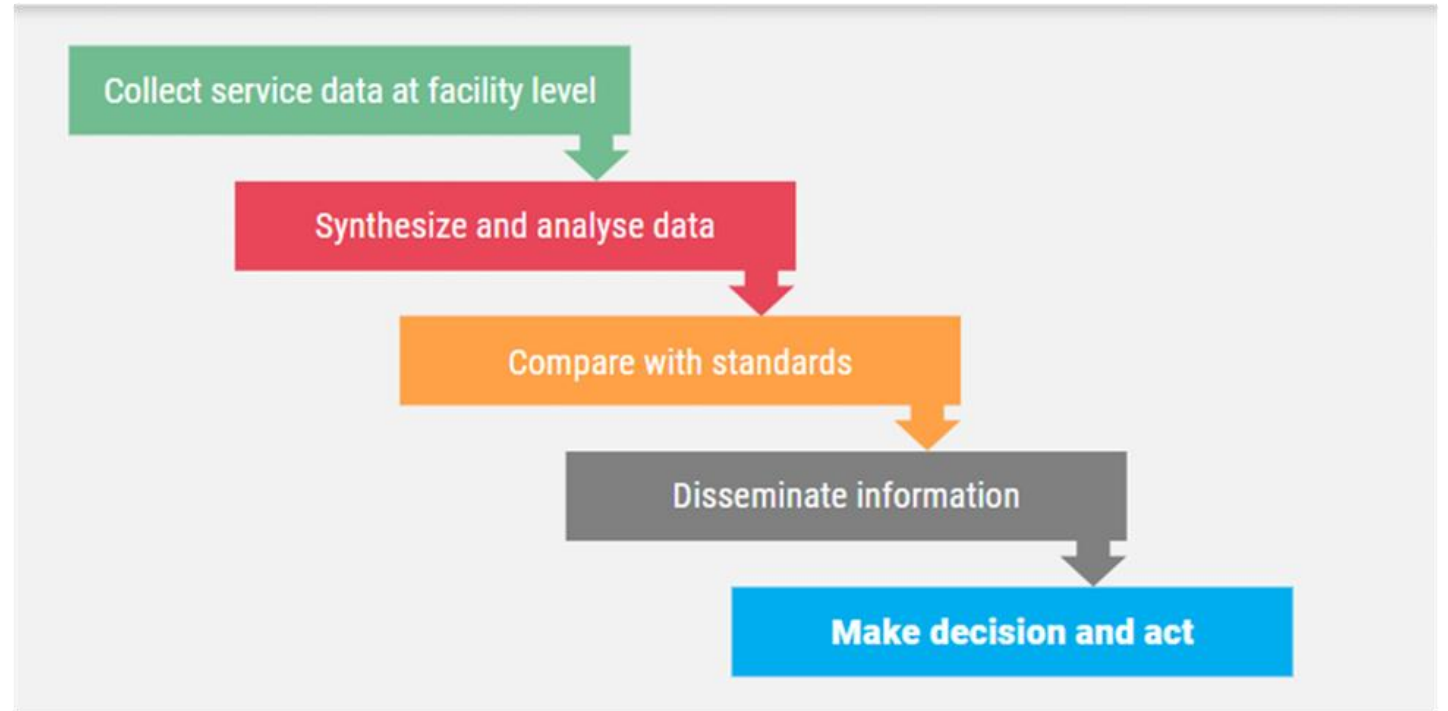
- Proportion of cancer tissue specimens with turn around time of less than 21 days for histology



REPUBLIC OF KENYA

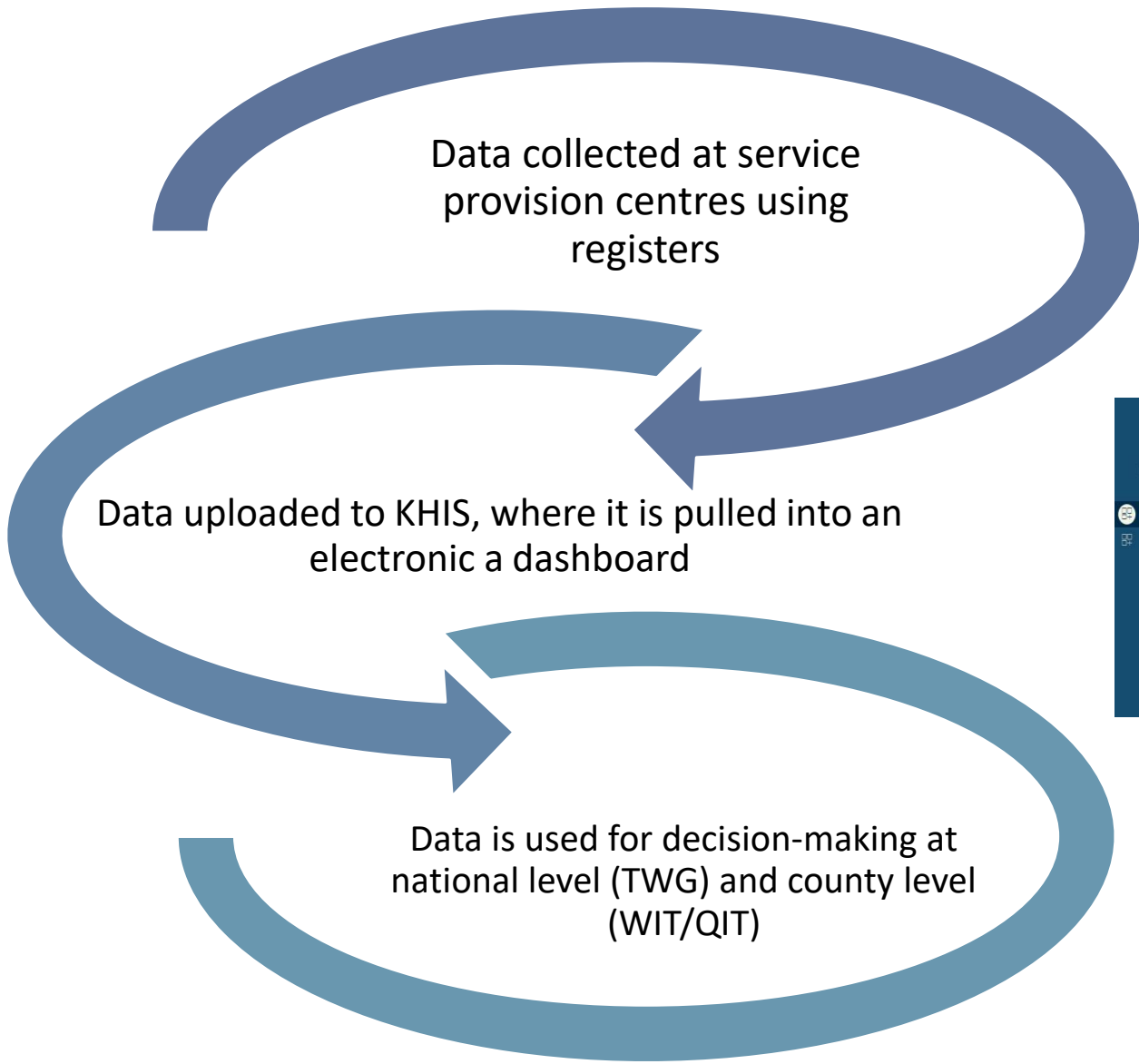
**Ministry of Health**

# Linking data to action






Linking data to action: case of cervical cancer



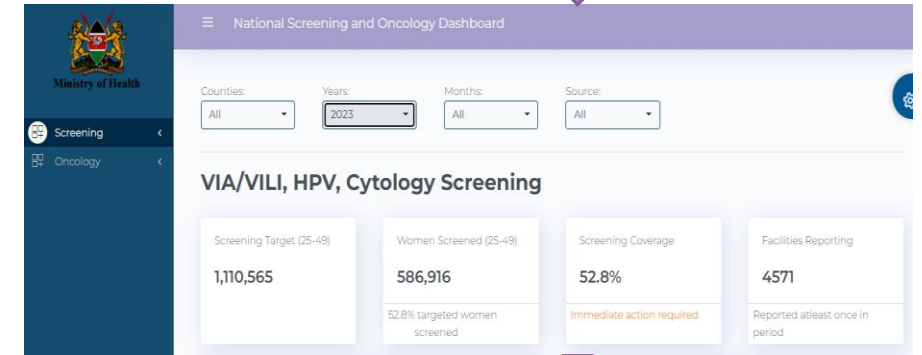
Republic of Kenya - Ministry of Health



**CANCER SCREENING REGISTER**  
MOH 412

County:	
Sub-County:	
Health Facility:	
KMHFL Code:	
Type:	Man. Agency:
Start Date:	End Date:

Revised Edition: June 2020



# Key lessons

---

Consider the broader health planning context

Work with all stakeholders

Track the process as well

Ensure linkage to decision-making



REPUBLIC OF KENYA

**Ministry of Health**

# The documents are available online..

---

Ministry of Health Website

<http://guidelines.health.go.ke>

ICCP website

<https://www.iccp-portal.org/news/kenya-national-cancer-control-strategy-2023-2027>

<https://www.iccp-portal.org/news/kenya-national-cancer-control-monitoring-evaluation-accountability-and-learning-meal-framework>



REPUBLIC OF KENYA

**Ministry of Health**